

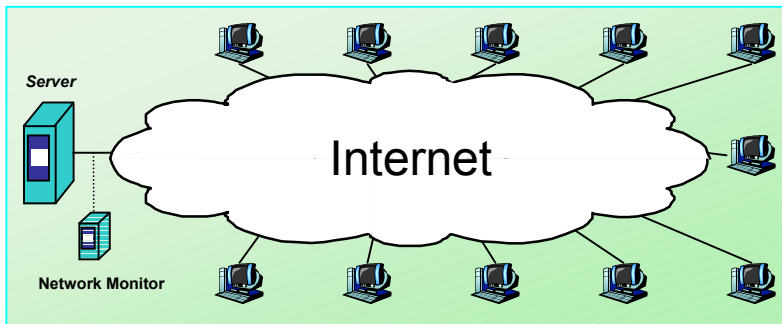
Provisioning On-line Games: A Traffic Analysis of a Busy Counter-Strike Server

Francis Chang, Wu-chang Feng, Wu-chi Feng, Jonathan Walpole

The Story:

A Week in the life of a loaded Counter-Strike Server

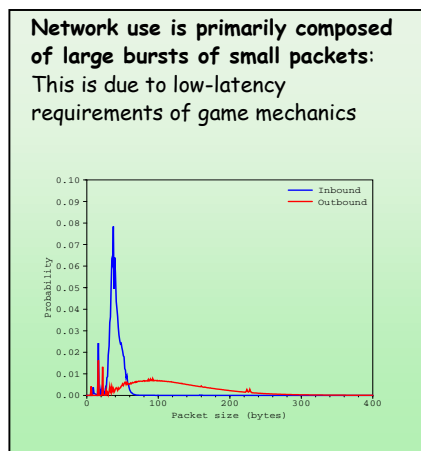
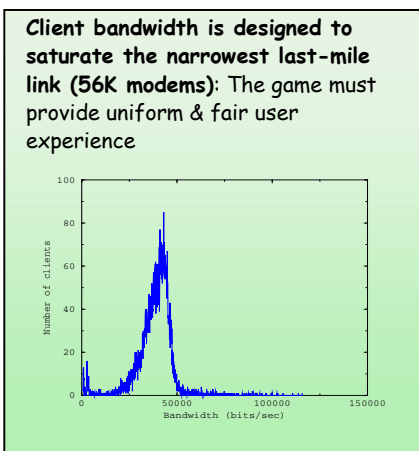
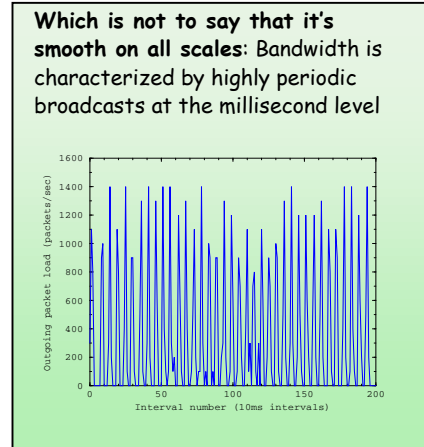
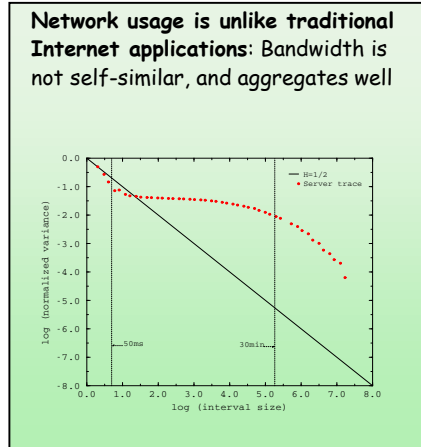
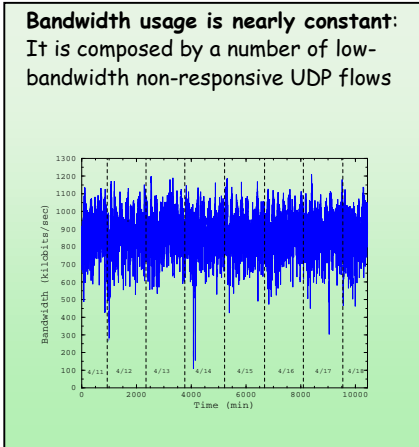
•Internet Video Games follow a simple client-server model: Multiple transient clients connect to a pre-existing stationary game server



Counter-Strike Screenshot



A simplified view of the network topology



Which can be disastrous if the server's network cannot switch at a high enough speed:

- Routers must be able to handle a large bursts of small packets
- Experiments with commercial NAT devices show a high packet loss rate, due to under-provisioned hardware
- But buffering is not the solution! Buffers introduce latency - which is detrimental to client performance

